

## DAISY-4X1-WW-D

~80° wide beam. Variant with diffused lenses.

### SPECIFICATION:

Dimensions	182.0 x 40.0 mm
Height	20.2 mm
Fastening	pin, screw, clips
ROHS compliant	yes ⓘ

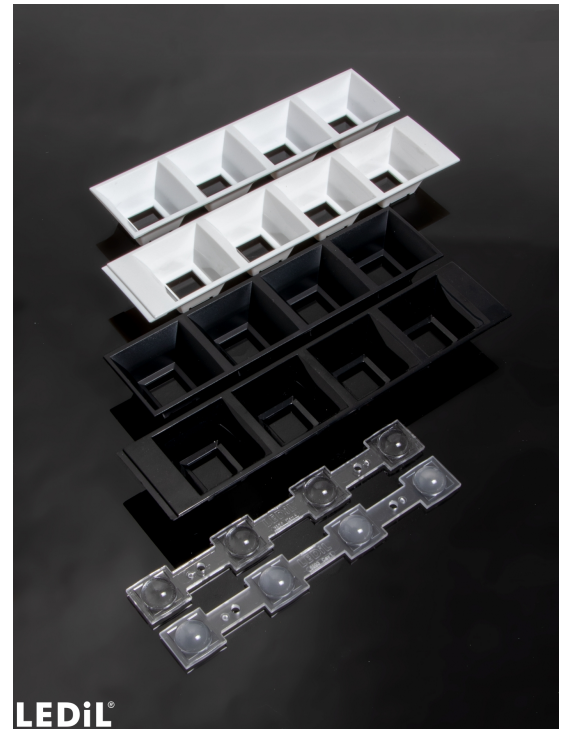
### MATERIALS:

Component	Type	Material	Colour	Finish
C16993_DAISY-4X1-WW-D	Linear lens	PMMA	milky	
C19075_DAISY-4X1-SHD2	Shade	PC	black	gloss
C18414_DAISY-4X1-SHD-MET-MATT	Shade	PC	metal	matt
C18412_DAISY-4X1-SHD2-MET	Shade	PC	metal	gloss
C18411_DAISY-4X1-SHD2-MET-MATT	Shade	PC	metal	matt
C18407_DAISY-4X1-SHD-MET	Shade	PC	metal	gloss
C17423_DAISY-4X1-SHD2-WHT-MATT	Shade	PC	white	matt
C17422_DAISY-4X1-SHD2-MATT	Shade	PC	black	matt
C16784_DAISY-4X1-SHD-WHT	Shade	PC	white	gloss
C16590_DAISY-4X1-SHD	Shade	PC	black	gloss

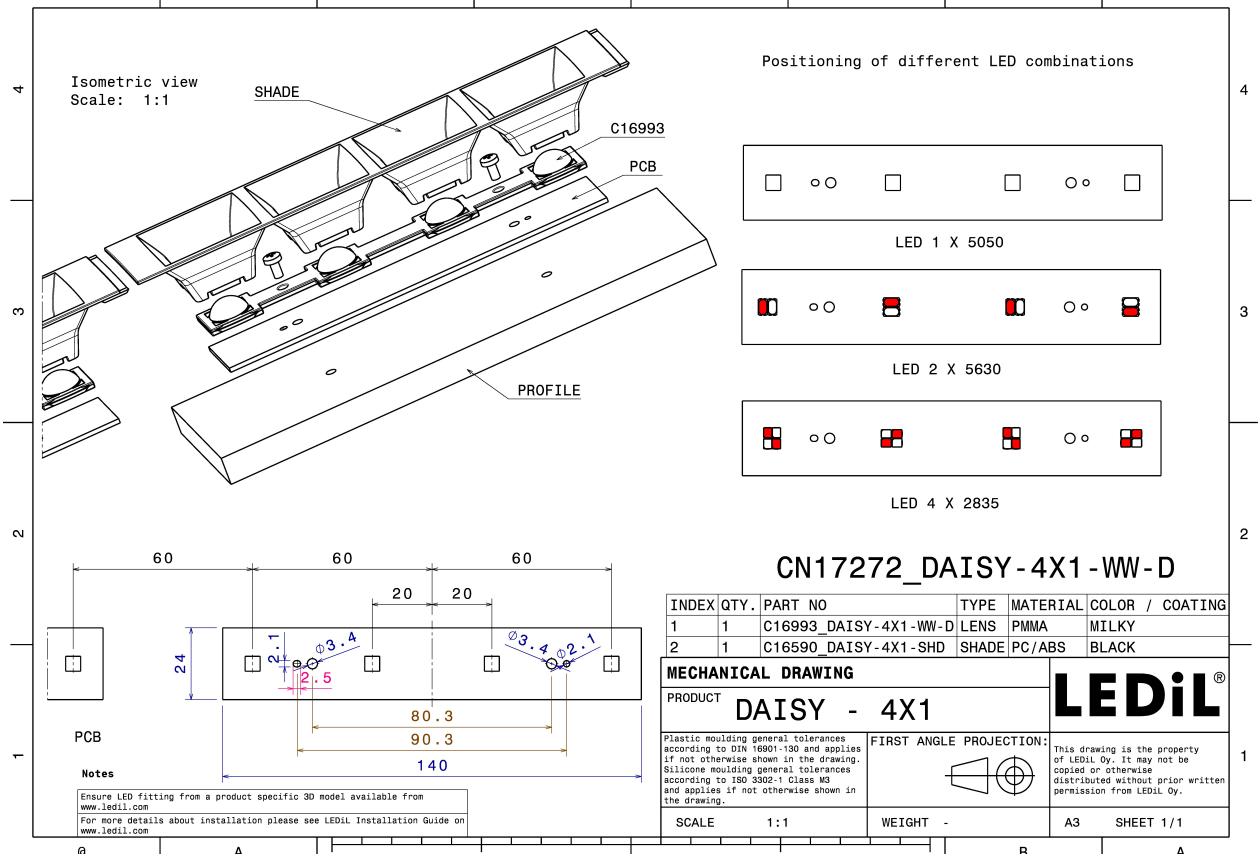
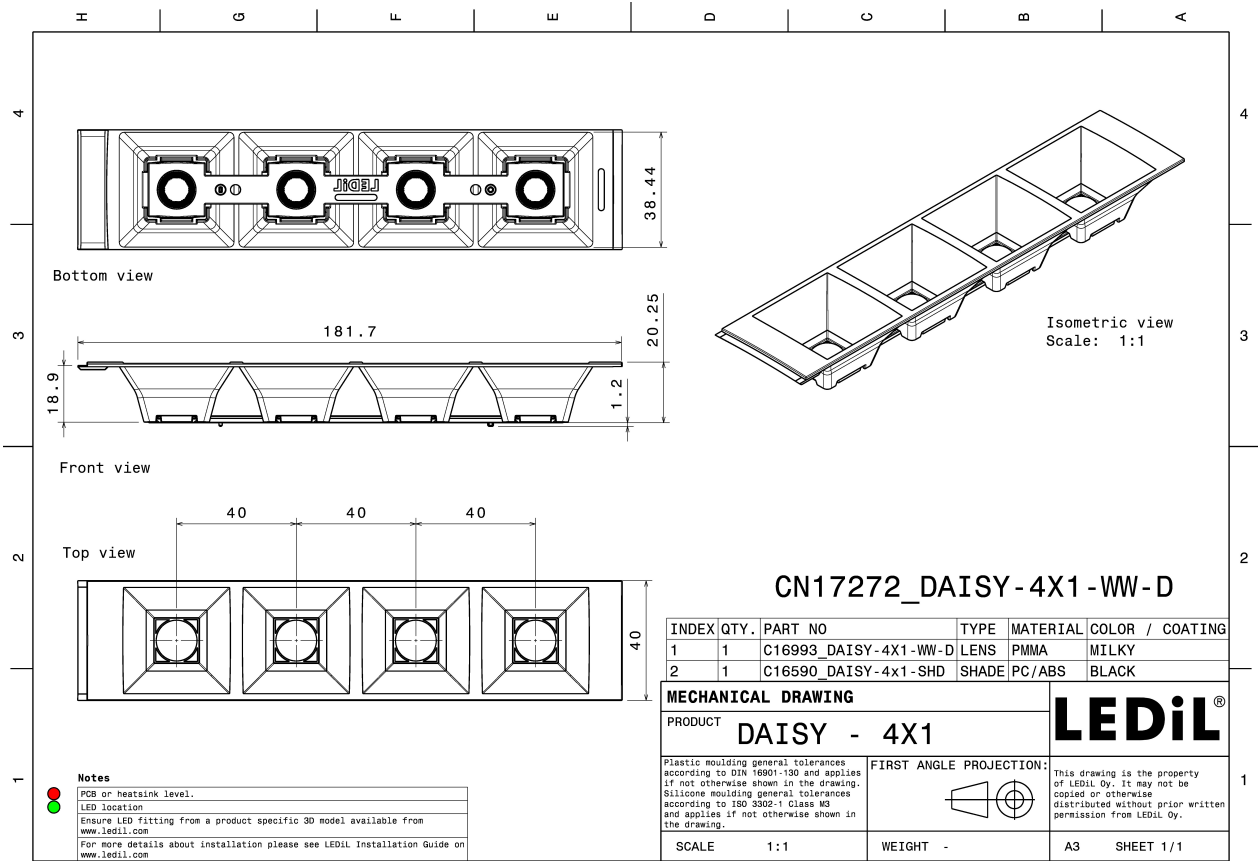
### ORDERING INFORMATION:

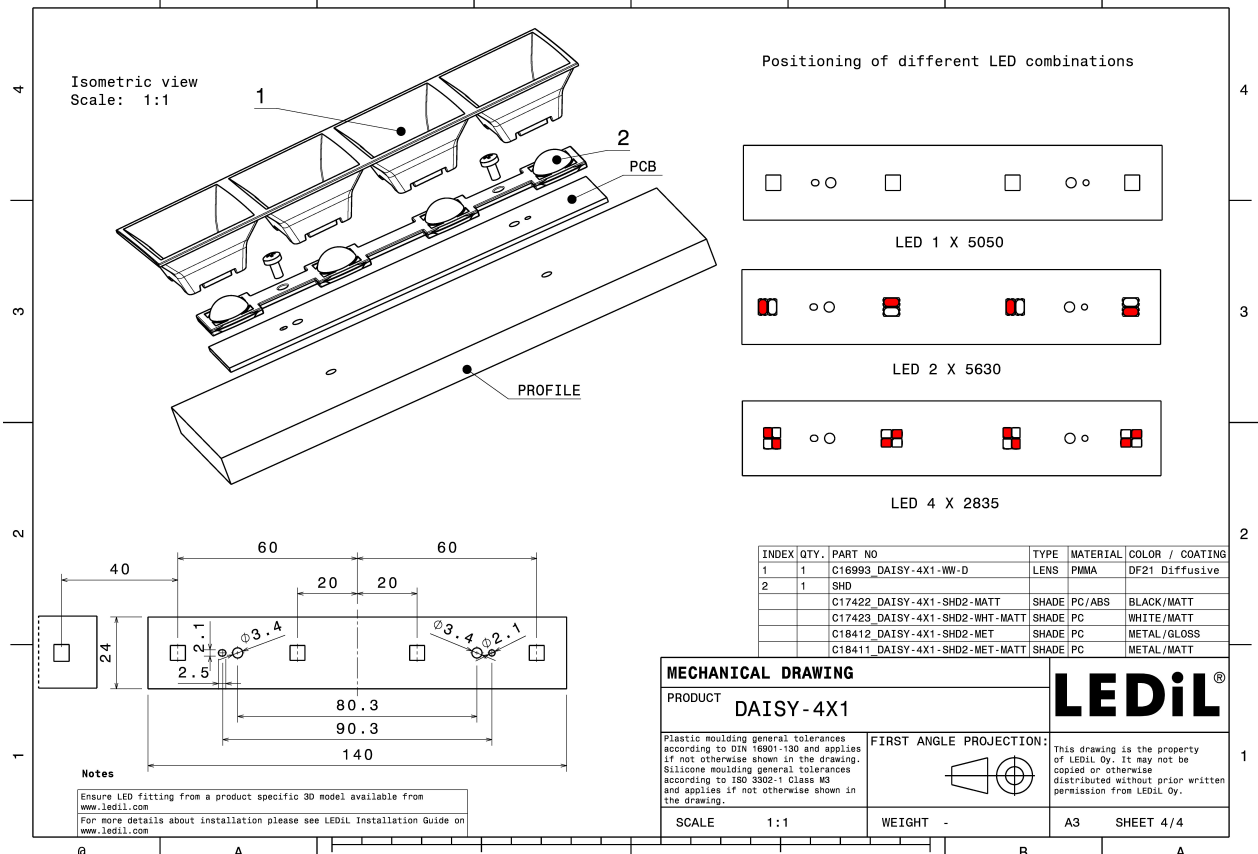
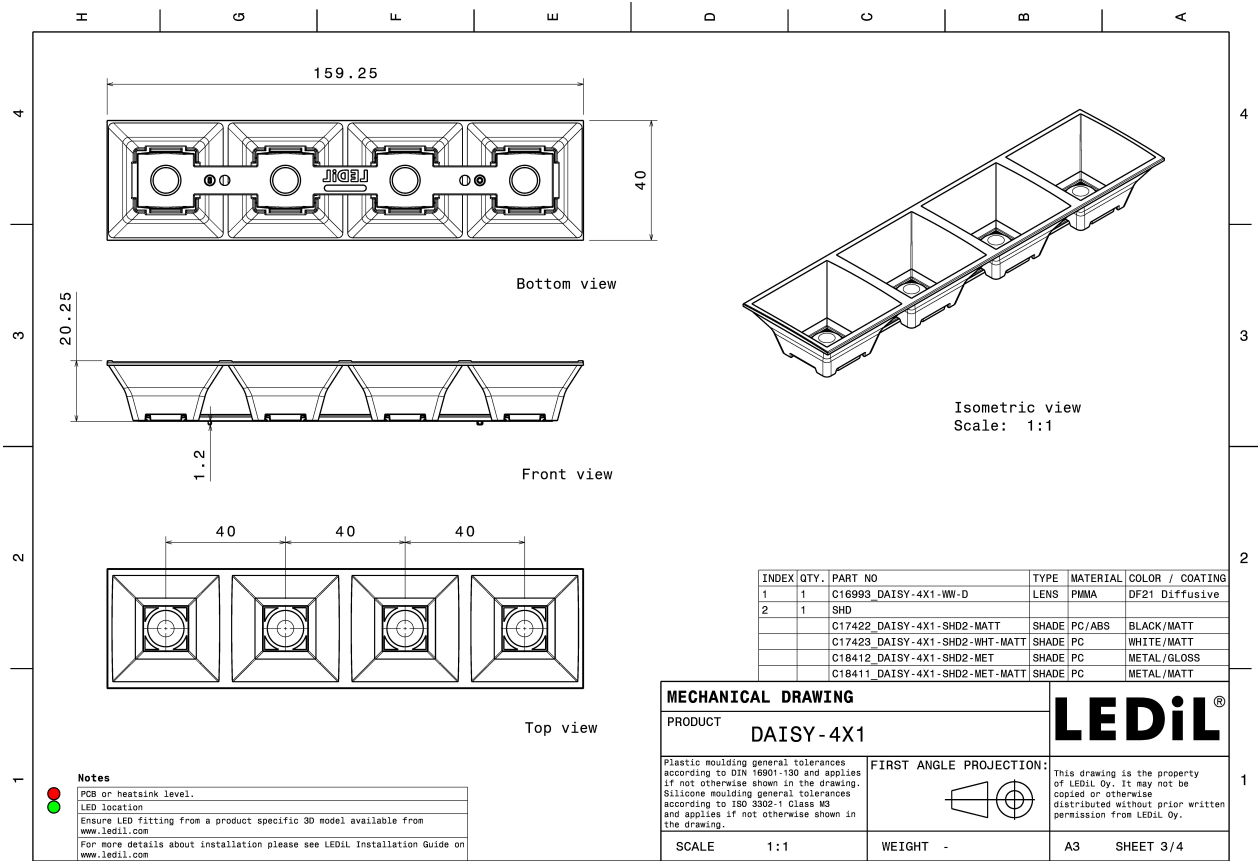
#### Quantities for one set:

Linear lens	1
Shade	1



Component		Qty in box	MOQ	MPQ	Box weight (kg)
C16993_DAISY-4X1-WW-D » Box size: 480 x 280 x 300 mm	Linear lens	504	336	21	5.6
C18411_DAISY-4X1-SHD2-MET-MATT » Box size: 480 x 280 x 300 mm	Shade	168	336	42	4.7
C17422_DAISY-4X1-SHD2-MATT » Box size: 480 x 280 x 300 mm	Shade	168	336	42	4.7
C18412_DAISY-4X1-SHD2-MET » Box size: 480 x 280 x 300 mm	Shade	168	336	42	
C16590_DAISY-4X1-SHD » Box size: 480 x 280 x 300 mm	Shade	168	336	42	4.9
C17423_DAISY-4X1-SHD2-WHT-MATT » Box size: 480 x 280 x 300 mm	Shade	168	336	42	4.9
C18414_DAISY-4X1-SHD-MET-MATT » Box size: 480 x 280 x 300 mm	Shade	168	336	42	4.3
C16784_DAISY-4X1-SHD-WHT » Box size: 480 x 280 x 300 mm	Shade	168	336	42	5.2
C18407_DAISY-4X1-SHD-MET » Box size: 480 x 280 x 300 mm	Shade	168	336	42	4.3
C19075_DAISY-4X1-SHD2 » Box size: 480 x 280 x 300 mm	Shade	168	336	42	4.4



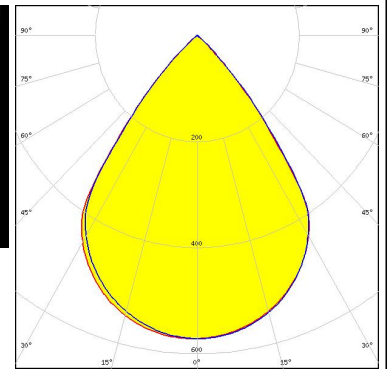
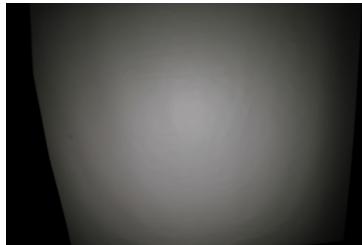


See also our general installation guide: [www.ledil.com/installation\\_guide](http://www.ledil.com/installation_guide)

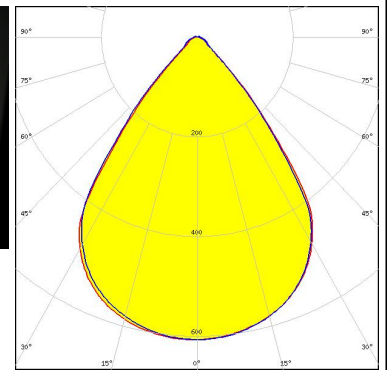
### OPTICAL RESULTS (MEASURED):



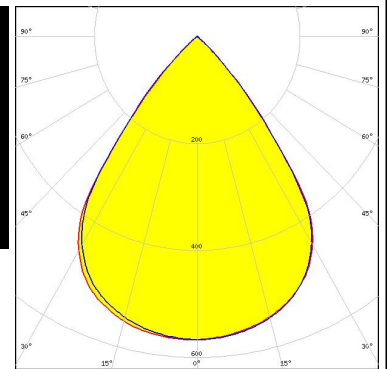
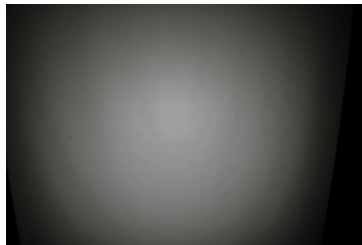
LED LIGHT ENGINE DAISY 16 LEDs 156mm x 20mm  
 FWHM / FWTM 74.5° / 92.0°  
 Efficiency 78 %  
 Peak intensity 0.6 cd/m  
 LEDs/each optic 4  
 Light colour White  
 Required components:  
 C17422\_DAISY-4X1-SHD2-MATT



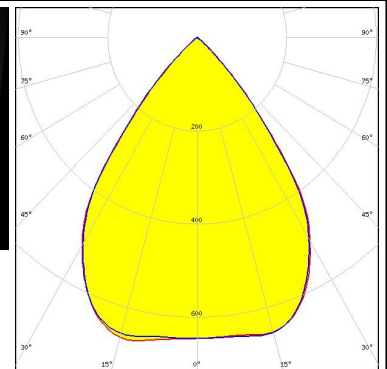
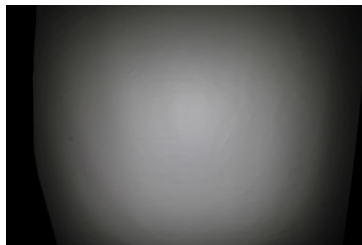
LED LIGHT ENGINE DAISY 16 LEDs 156mm x 20mm  
 FWHM / FWTM 75.5° / 96.0°  
 Efficiency 92 %  
 Peak intensity 0.6 cd/m  
 LEDs/each optic 4  
 Light colour White  
 Required components:  
 C17423\_DAISY-4X1-SHD2-WHT-MATT



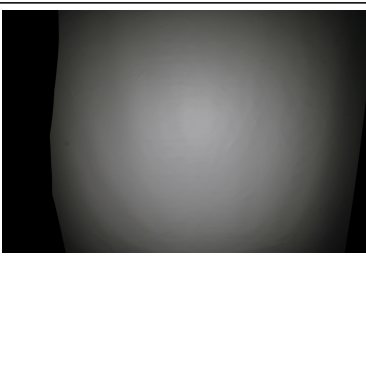
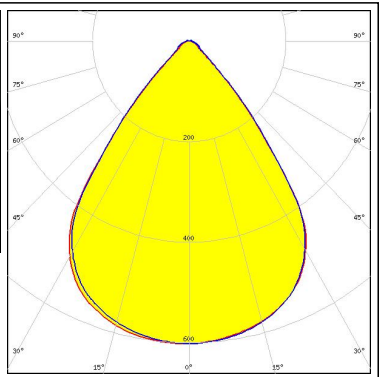
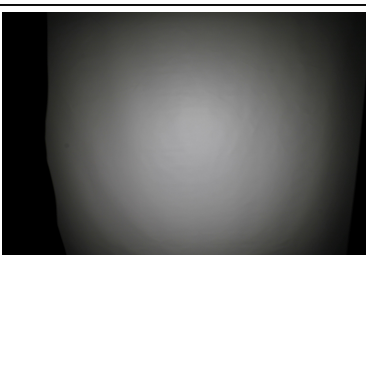
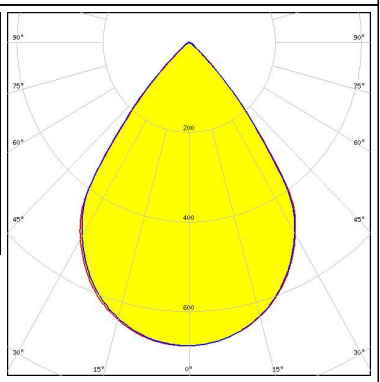
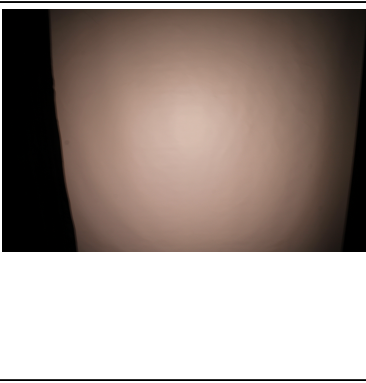
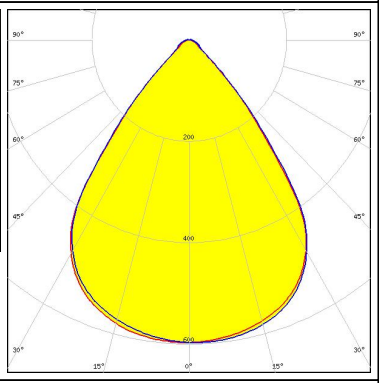
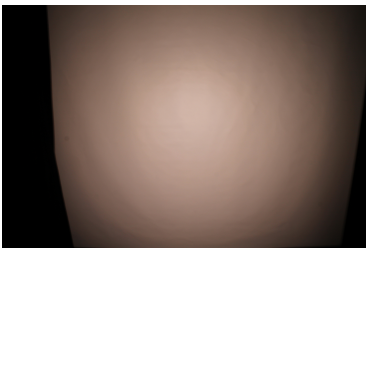
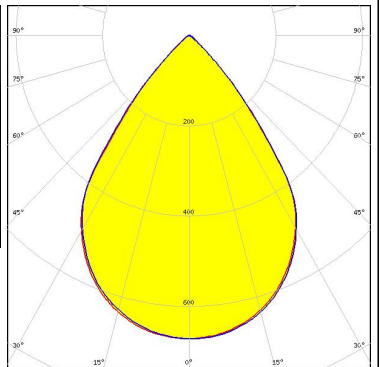
LED LIGHT ENGINE DAISY 16 LEDs 156mm x 20mm  
 FWHM / FWTM 75.0° / 93.0°  
 Efficiency 79 %  
 Peak intensity 0.6 cd/m  
 LEDs/each optic 4  
 Light colour White  
 Required components:  
 C16590\_DAISY-4X1-SHD



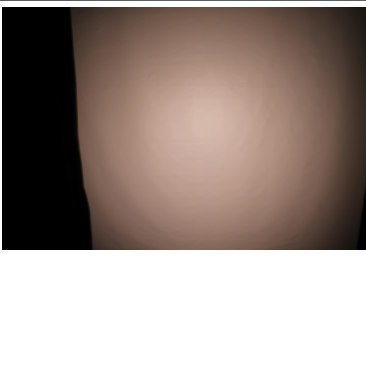
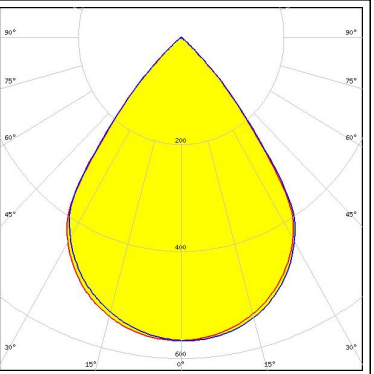
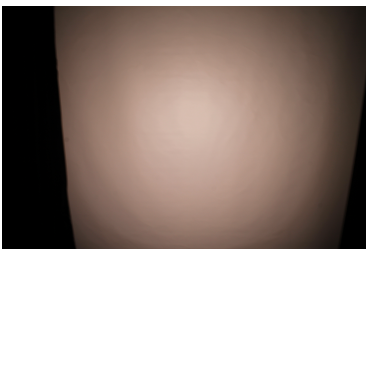
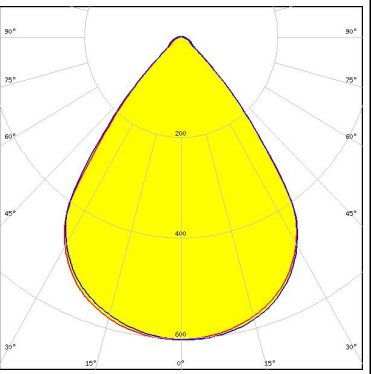
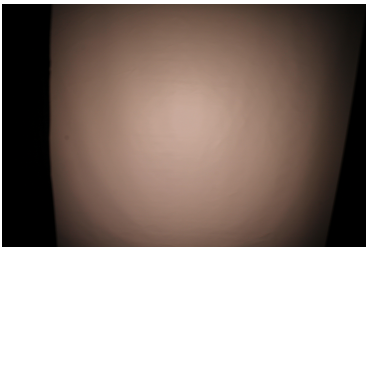
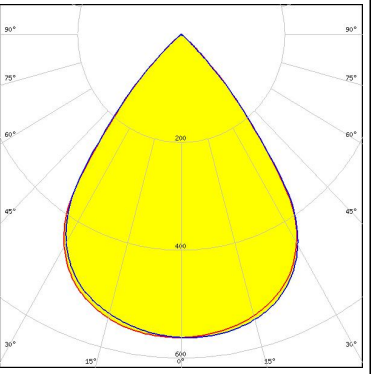
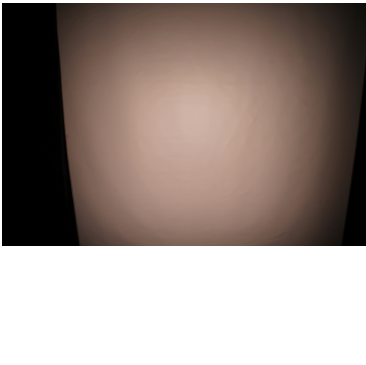
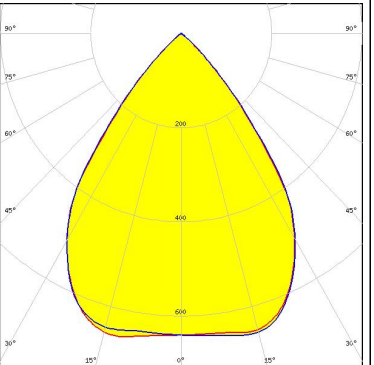
LED LIGHT ENGINE DAISY 16 LEDs 156mm x 20mm  
 FWHM / FWTM 73.5° / 93.0°  
 Efficiency 94 %  
 Peak intensity 0.7 cd/m  
 LEDs/each optic 4  
 Light colour White  
 Required components:  
 C17528\_DAISY-4X1-SHD-MET



### OPTICAL RESULTS (MEASURED):

<p><b>AUDAX</b> ELECTRONICS</p> <p>LED LIGHT ENGINE DAISY 16 LEDs 156mm x 20mm            FWHM / FWTM 75.5° / 96.0°            Efficiency 93 %            Peak intensity 0.6 cd/lm            LEDs/each optic 4            Light colour White            Required components:            C16784_DAISY-4X1-SHD-WHT</p>		
<p><b>AUDAX</b> ELECTRONICS</p> <p>LED LIGHT ENGINE DAISY 16 LEDs 156mm x 20mm            FWHM / FWTM 74.0° / 94.0°            Efficiency 91 %            Peak intensity 0.7 cd/lm            LEDs/each optic 4            Light colour White            Required components:            C17535_DAISY-4X1-SHD2-MET-MATT</p>		
<p><b>MST</b>   Your solutions</p> <p>LED LinLED 156x28mm 2x400lm 827-865 2x2C 12V Opt G1            FWHM / FWTM 75.5 + 76.5° / 97.0 + 97.5°            Efficiency 93 %            Peak intensity 0.6 cd/lm            LEDs/each optic 4            Light colour Tunable White            Required components:            C16784_DAISY-4X1-SHD-WHT</p>		
<p><b>MST</b>   Your solutions</p> <p>LED LinLED 156x28mm 2x400lm 827-865 2x2C 12V Opt G1            FWHM / FWTM 74.0 + 74.5° / 94.5°            Efficiency 92 %            Peak intensity 0.7 cd/lm            LEDs/each optic 4            Light colour Tunable White            Required components:            C17535_DAISY-4X1-SHD2-MET-MATT</p>		

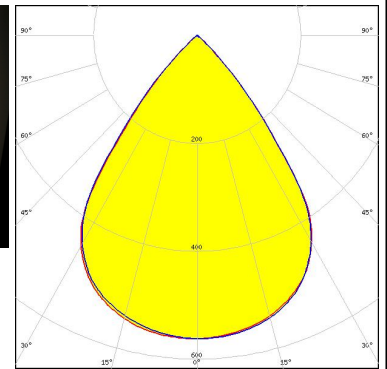
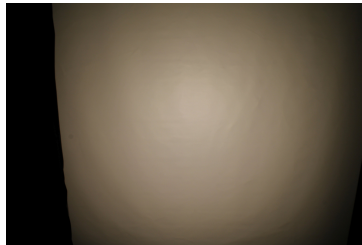
### OPTICAL RESULTS (MEASURED):

<p><b>MST</b> <i>Your solutions</i></p> <p>LED LinLED 156x28mm 2x400lm 827-865 2x2C 12V Opt G1</p> <p>FWHM / FWTM 74.5 + 75.0° / 93.5°</p> <p>Efficiency 78 %</p> <p>Peak intensity 0.6 cd/lm</p> <p>LEDs/each optic 4</p> <p>Light colour Tunable White</p> <p>Required components: C17422_DAISSY-4X1-SHD2-MATT</p>		
<p><b>MST</b> <i>Your solutions</i></p> <p>LED LinLED 156x28mm 2x400lm 827-865 2x2C 12V Opt G1</p> <p>FWHM / FWTM 76.0 + 76.5° / 97.0 + 97.5°</p> <p>Efficiency 92 %</p> <p>Peak intensity 0.6 cd/lm</p> <p>LEDs/each optic 4</p> <p>Light colour Tunable White</p> <p>Required components: C17423_DAISSY-4X1-SHD2-WHT-MATT</p>		
<p><b>MST</b> <i>Your solutions</i></p> <p>LED LinLED 156x28mm 2x400lm 827-865 2x2C 12V Opt G1</p> <p>FWHM / FWTM 74.5 + 75.5° / 93.0 + 93.5°</p> <p>Efficiency 79 %</p> <p>Peak intensity 0.6 cd/lm</p> <p>LEDs/each optic 4</p> <p>Light colour Tunable White</p> <p>Required components: C16590_DAISSY-4X1-SHD</p>		
<p><b>MST</b> <i>Your solutions</i></p> <p>LED LinLED 156x28mm 2x400lm 827-865 2x2C 12V Opt G1</p> <p>FWHM / FWTM 74.0° / 94.0°</p> <p>Efficiency 94 %</p> <p>Peak intensity 0.7 cd/lm</p> <p>LEDs/each optic 4</p> <p>Light colour Tunable White</p> <p>Required components: C17528_DAISSY-4X1-SHD-MET</p>		

### OPTICAL RESULTS (MEASURED):

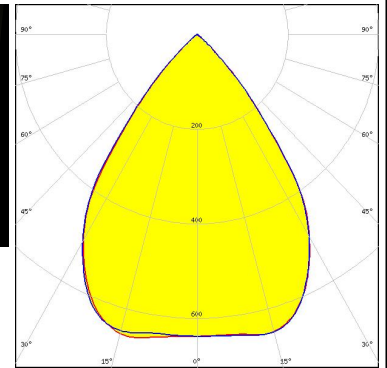
#### MST *Your solutions*

LED LinLED 156x28mm 800lm 8x0 2C 12V Opt G1  
 FWHM / FWTM 74.0 + 74.5° / 92.5°  
 Efficiency 78 %  
 Peak intensity 0.6 cd/lm  
 LEDs/each optic 4  
 Light colour White  
 Required components:  
 C16590\_DAISSY-4X1-SHD



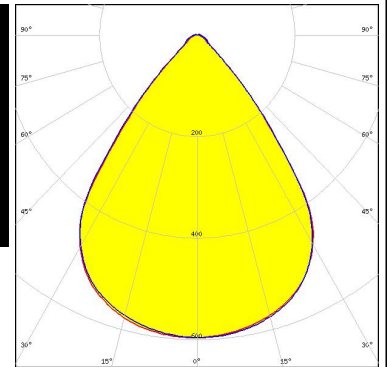
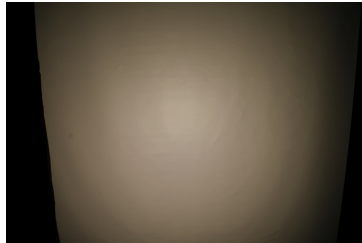
#### MST *Your solutions*

LED LinLED 156x28mm 800lm 8x0 2C 12V Opt G1  
 FWHM / FWTM 73.5° / 93.0 + 93.5°  
 Efficiency 93 %  
 Peak intensity 0.7 cd/lm  
 LEDs/each optic 4  
 Light colour White  
 Required components:  
 C17528\_DAISSY-4X1-SHD-MET



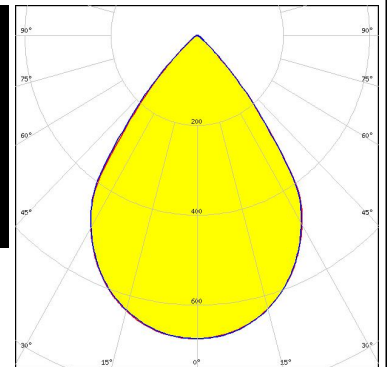
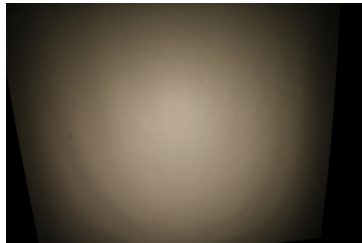
#### MST *Your solutions*

LED LinLED 156x28mm 800lm 8x0 2C 12V Opt G1  
 FWHM / FWTM 75.5° / 96.5 + 97.0°  
 Efficiency 91 %  
 Peak intensity 0.6 cd/lm  
 LEDs/each optic 4  
 Light colour White  
 Required components:  
 C16784\_DAISSY-4X1-SHD-WHT



#### MST *Your solutions*

LED LinLED 156x28mm 800lm 8x0 2C 12V Opt G1  
 FWHM / FWTM 73.5° / 94.0 + 94.5°  
 Efficiency 90 %  
 Peak intensity 0.7 cd/lm  
 LEDs/each optic 4  
 Light colour White  
 Required components:  
 C17535\_DAISSY-4X1-SHD2-MET-MATT

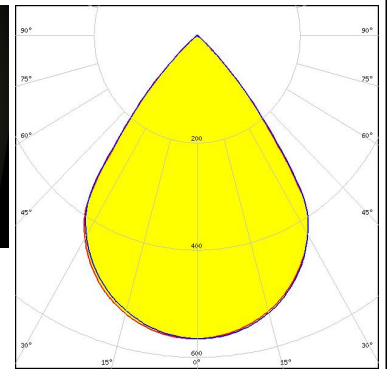
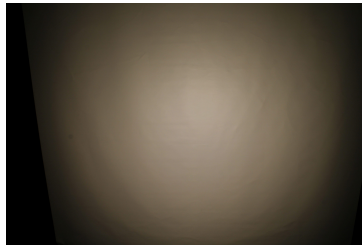




### OPTICAL RESULTS (MEASURED):

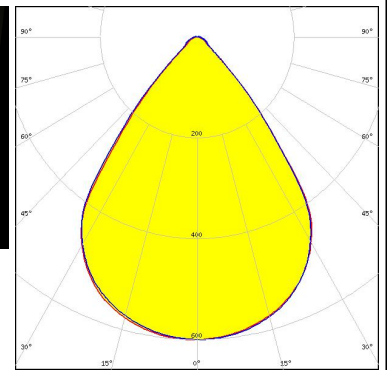
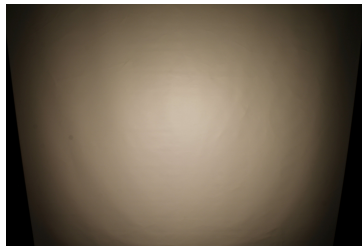
#### MST *Your solutions*

LED LinLED 156x28mm 800lm 8x0 2C 12V Opt G1  
 FWHM / FWTM 74.5° / 92.5°  
 Efficiency 76 %  
 Peak intensity 0.6 cd/lm  
 LEDs/each optic 4  
 Light colour White  
 Required components:  
 C17422\_DAISSY-4X1-SHD2-MATT



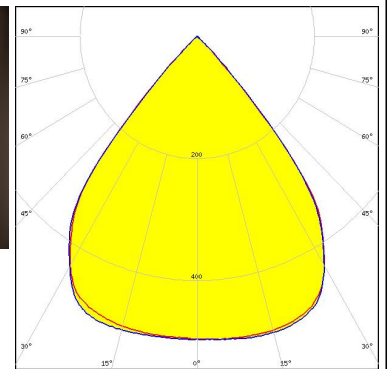
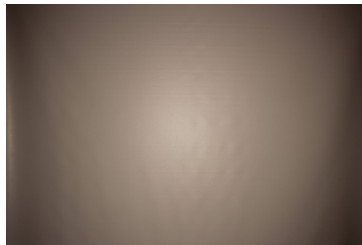
#### MST *Your solutions*

LED LinLED 156x28mm 800lm 8x0 2C 12V Opt G1  
 FWHM / FWTM 75.0 + 75.5° / 96.0 + 97.0°  
 Efficiency 91 %  
 Peak intensity 0.6 cd/lm  
 LEDs/each optic 4  
 Light colour White  
 Required components:  
 C17423\_DAISSY-4X1-SHD2-WHT-MATT



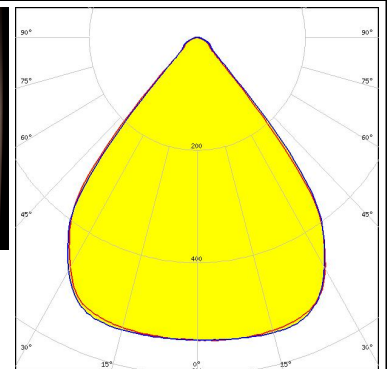
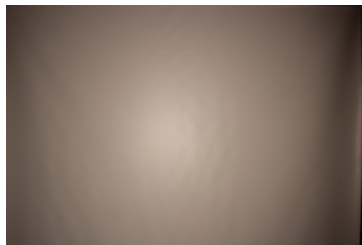
#### NICHIA

LED NF2W757G-MT (Tunable White)  
 FWHM / FWTM 79.0° / 90.0°  
 Efficiency 79 %  
 Peak intensity 0.5 cd/lm  
 LEDs/each optic 1  
 Light colour Tunable White  
 Required components:  
 C16590\_DAISSY-4X1-SHD



#### NICHIA

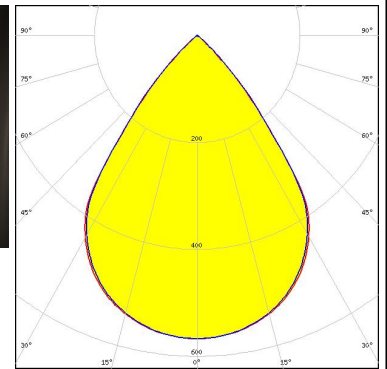
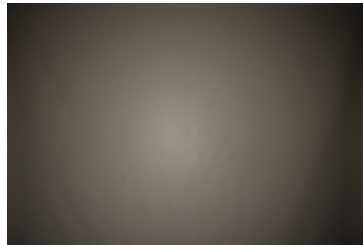
LED NF2W757G-MT (Tunable White)  
 FWHM / FWTM 80.0° / 95.0°  
 Efficiency 93 %  
 Peak intensity 0.5 cd/lm  
 LEDs/each optic 1  
 Light colour Tunable White  
 Required components:  
 C16784\_DAISSY-4X1-SHD-WHT



### OPTICAL RESULTS (MEASURED):

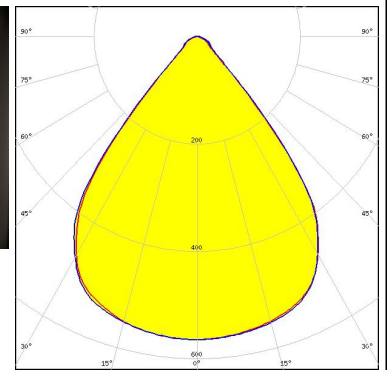
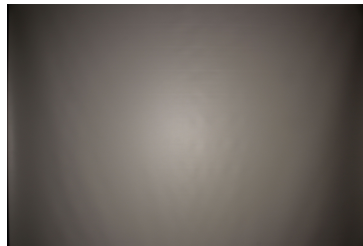
#### OSRAM

LED PL-LIN-1000 140x24mm  
 FWHM / FWTM 74.0° / 94.0°  
 Efficiency 77 %  
 Peak intensity 0.6 cd/lm  
 LEDs/each optic 4  
 Light colour White  
 Required components:  
 C17422\_DAISSY-4X1-SHD2-MATT



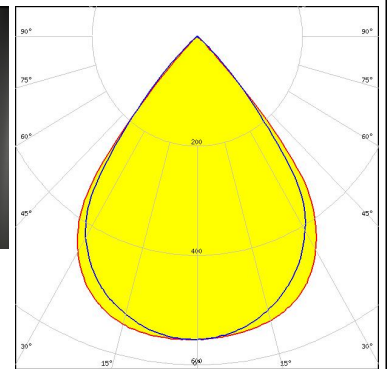
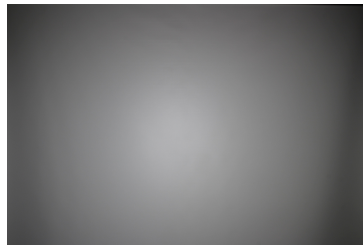
#### SAMSUNG

LED LM28xB Series  
 FWHM / FWTM 78.0° / 95.0°  
 Efficiency 93 %  
 Peak intensity 0.6 cd/lm  
 LEDs/each optic 1  
 Light colour White  
 Required components:  
 C16784\_DAISSY-4X1-SHD-WHT



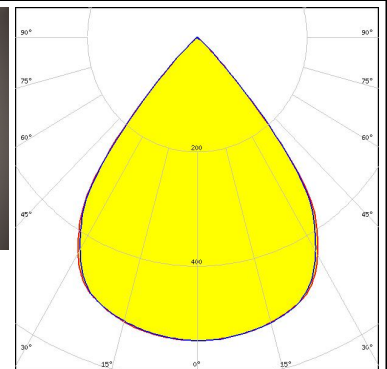
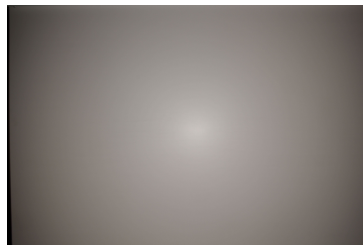
#### SAMSUNG

LED LM28xB Series  
 FWHM / FWTM 76.0° / 90.0°  
 Efficiency 78 %  
 Peak intensity 0.6 cd/lm  
 LEDs/each optic 1  
 Light colour White  
 Required components:  
 C17422\_DAISSY-4X1-SHD2-MATT

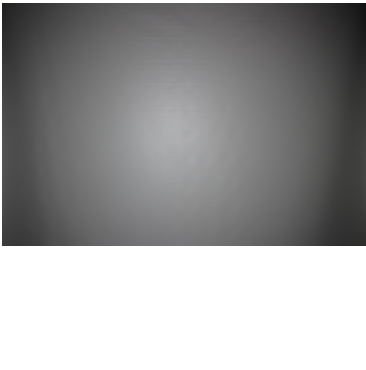
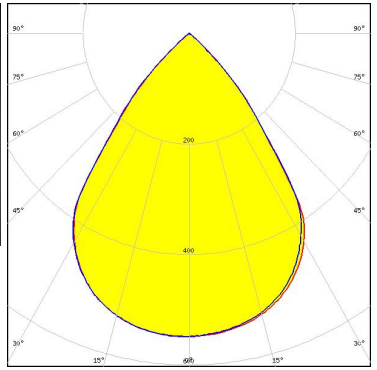

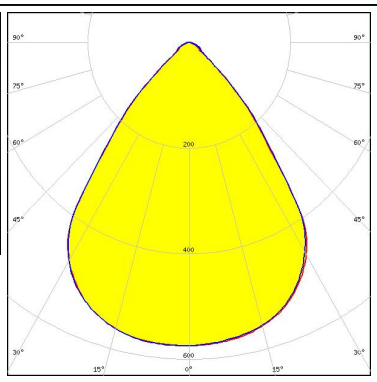
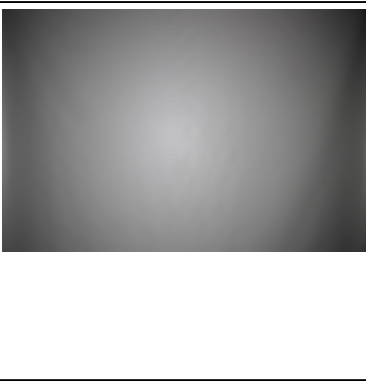
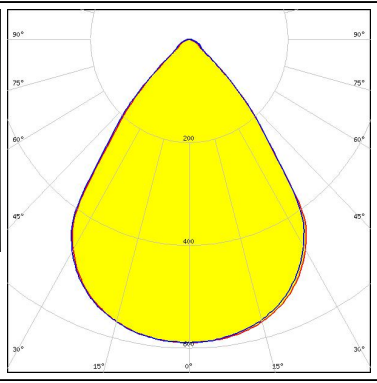

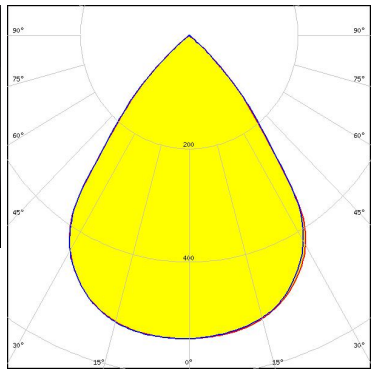


#### SAMSUNG

LED LM28xB Series  
 FWHM / FWTM 78.0° / 91.0°  
 Efficiency 79 %  
 Peak intensity 0.5 cd/lm  
 LEDs/each optic 2  
 Light colour White  
 Required components:  
 C16590\_DAISSY-4X1-SHD



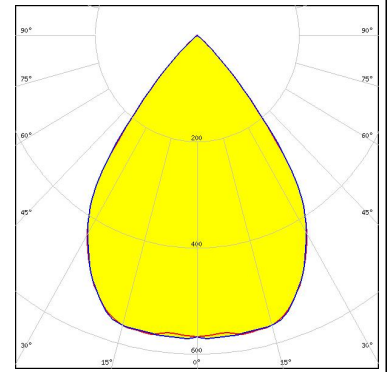
### OPTICAL RESULTS (MEASURED):

<p><b>TEPCOMP</b> group</p> <p>LED                    PassivePAQ-L-0.5F35-SSA3-1.6K-840-3-DC</p> <p>FWHM / FWTM        74.0° / 96.0°</p> <p>Efficiency            76 %</p> <p>Peak intensity        0.5 cd/m</p> <p>LEDs/each optic     4</p> <p>Light colour         White</p> <p>Required components: C17422_DAISSY-4X1-SHD2-MATT</p>		
<p><b>TEPCOMP</b> group</p> <p>LED                    PassivePAQ-L-0.5F35-SSA3-1.6K-840-3-DC</p> <p>FWHM / FWTM        76.0° / 101.0°</p> <p>Efficiency            91 %</p> <p>Peak intensity        0.6 cd/m</p> <p>LEDs/each optic     4</p> <p>Light colour         White</p> <p>Required components: C16784_DAISSY-4X1-SHD-WHT</p>		
<p><b>TEPCOMP</b> group</p> <p>LED                    PassivePAQ-L-0.5F35-SSA3-1.6K-840-3-DC</p> <p>FWHM / FWTM        75.0° / 100.0°</p> <p>Efficiency            92 %</p> <p>Peak intensity        0.6 cd/m</p> <p>LEDs/each optic     4</p> <p>Light colour         White</p> <p>Required components: C17423_DAISSY-4X1-SHD2-WHT-MATT</p>		
<p><b>TEPCOMP</b> group</p> <p>LED                    PassivePAQ-L-0.5F35-SSA3-1.6K-840-3-DC</p> <p>FWHM / FWTM        75.0° / 96.0°</p> <p>Efficiency            77 %</p> <p>Peak intensity        0.5 cd/m</p> <p>LEDs/each optic     4</p> <p>Light colour         White</p> <p>Required components: C16590_DAISSY-4X1-SHD</p>		

### OPTICAL RESULTS (SIMULATED):

#### SAMSUNG

LED	LM28xB Series
FWHM / FWTM	74.0° / 92.0°
Efficiency	76 %
Peak intensity	0.6 cd/lm
LEDs/each optic	4
Light colour	White
Required components:	
	C17422_DAISSY-4X1-SHD2-MATT



### GENERAL INFORMATION:

NOTE: The typical beam angle will be changed by different color, chip size and chip position tolerance. The typical total beam angle is the full angle measured where the luminous intensity is half of the peak value.

### MATERIALS:

As part of our continuous research and improvement processes, and to ensure the best possible quality and availability of our products, LEDiL reserves the right to change material grades without notice.

### PRODUCT DATA USER AGREEMENT AND DISCLAIMER:

The measured data in the provided downloadable LEDiL Product Datasheets and Mechanical 2D-Drawings is rounded and provided as reference for planning. LEDiL Oy's optical specifications have been verified by conducting performance testing of the products in accordance with the company's quality system. The reported data are averaged results of multiple measurements with typical variation. LEDiL Oy reserves the right to without prior notification make changes and improvements to its products.

LEDiL Oy assumes neither warranty, nor guarantee nor any other liability of any kind for the contents and correctness of the provided data. The provided data has been generated with highest diligence but the provided data may in reality not represent the complete possible variation range of all intrinsic parameters. Therefore, in certain cases a deviation from the provided data could occur.

LEDiL Oy reserves the right to undertake technical changes of its products without further notification which could lead to changes in the provided data. LEDiL Oy assumes no liability of any kind for the possible deviation from any provided data or any other damage resulting from the usage of the provided data.

The user agrees to this disclaimer and user agreement with the download or usage of the provided files.

#### LEDiL Oy

Joensuunkatu 13  
FI-24240 SALO  
Finland

#### LEDiL Inc.

228 West Page Street  
Suite D  
Sycamore IL 60178  
USA

#### Ledil Optics Technology (Shenzhen) Co., Ltd.

# 405 , Block B  
Casic Motor Building  
Shenzhen 518057  
P.R.CHINA

#### Local sales and technical support

[www.ledil.com/  
where\\_to\\_buy](http://www.ledil.com/where_to_buy)

#### Shipping locations

Salo, Finland  
Hong Kong, China

#### Distribution Partners

[www.ledil.com/  
where\\_to\\_buy](http://www.ledil.com/where_to_buy)