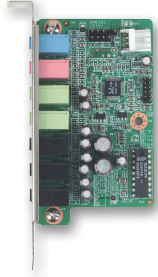
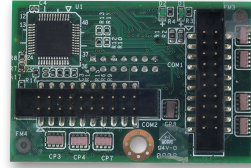


Extension Modules for Slot SBCs



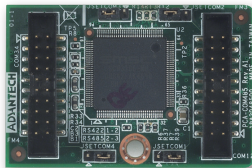
PCA-AUDIO-HDA1E

- 7.1 Channel HD Audio Extension Module
- Line-in, Mic-in, Lin-out, Front-out, Speaker-out, Rear-out, Subcen-out, Side-out
- Dimensions (L x H) : 47.5 x 80.74 mm (1.87" x 3.17")



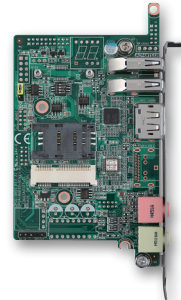
PCA-COM232-00A1E

- 4 RS-232 series ports extension module by LPC connector on CPU card.
- Dimensions (L x H) : 31.5 x 48 mm (1.24" x 1.88")



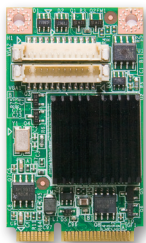
PCA-COM485-00A1E

- 4 RS-422/485 series ports extension module by LPC connector on CPU card.
- With Auto-flow control function
- Dimensions (L x H) : 31.5 x 48 mm (1.24" x 1.88")



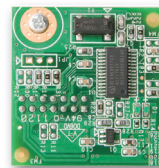
PCE-SA01-00A1E

- I/O extension stack board
- 1 DP, 2 USB 3.0, MIC-in, LINE-out
- Dimensions (L x H) : 68 x 125 mm (2.67" x 4.92")
- Supports Model: PCE-3029, PCE-4128, PCE-4129



PCA-5650-00A1E

- 2 VGA output Mini PCI Express Graphic card
- GPU: Silicon Motion SM750
- VGA output: 1920 x 1080, up to 75Hz vertical rate
- 16 Mb of embedded DDR memory



PCA-TPM-00A1E

- Trusted platform module compliant with TCG 1.2 specification and TCG software stack 1.2 via LPC connector on CPU card
- Hardware based data protection solution for storage device encryption and decryption
- Dimensions (L x H) : 31.5 x 30.5 mm (1.24" x 1.2")



IPMI-1000-00A1E

- IPMI2.0 Server-grade remote control solution
- OS independent hardware-based solution
- Real-time and centralized management
- KVM over IP remote control function
- User friendly UI and utility
- Supports Model: PCE-5126WG2, PCE-7127, PCE-5128



PCA-TPM-00B1E

- Trusted platform module compliant with TCG 2.0 specification and TCG software stack 2.0 via LPC connector on CPU card
- Hardware based data protection solution for storage device encryption and decryption
- Dimensions (L x H) : 31.5 x 30.5 mm (1.24" x 1.2")